

OUR GOAL IS TO MAKE CORPORATE SOCIAL RESPONSIBILITY OPERATIONAL FOR SMALL & MEDIUM ENTERPRISES

WHAT IS REAP?

The 'Responsible Entrepreneurs Achievement Programme' (REAP) is a CSR-based management & reporting tool. It was developed in order to assist Small & Medium Enterprises (SMEs) in their efforts to implement CSR-based management approaches and operation methods.

REAP allows for:

- Effective self-diagnosis for SMEs regarding their CSR performance;
- Marketing and positioning of SMEs in global value chains;
- Standardized reporting for global benchmarking and assessment of SME suppliers and partners worldwide;
- Thorough implementation of Responsible Supply Chain Management on local supplier level.



You can download the REAP software and manual from

<http://www.unido.org/reap>

System Requirements:

- Internet Connection
- Windows Operating System (98 and higher)



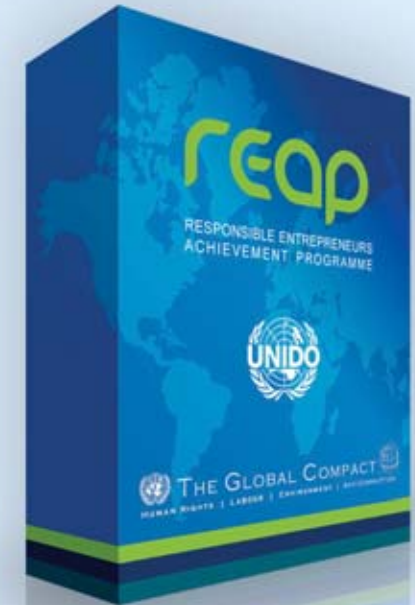
United Nations
Industrial Development Organization

Small & Medium Enterprise Branch
Vienna International Centre
A-1400 Vienna, Austria

reap@unido.org

www.unido.org/reap

SUSTAINABLE INDUSTRIAL DEVELOPMENT



REAP

RESPONSIBLE ENTREPRENEURS
ACHIEVEMENT PROGRAMME

WHO CAN USE REAP?

- Small & Medium Enterprises for their performance evaluation, strategic planning and promotional activities
- Multinational enterprises for their global Responsible Supply Chain Management



REAP IS BASED ON THE FOLLOWING APPROACHES:

- the Triple-Bottom-Line (TBL) Approach, which combines financial, environmental and social data in an assessment of a company's achievements
- the UN Global Compact (10 principles of good corporate conduct), covering Human Rights, Labour Standards, Environment and Anti-Corruption
- Best practices in Responsible Supply Chain Management

DATA ENTRY

- Organization & HR
- Processes & Emissions
- Finance & Audit
- Human Rights & Labour Standards
- Environment
- Anti-Corruption



reap



CSR Report

- for external use
- for promotional use

CSR Scorecard

- for internal use
- for strategic planning & process improvement

REAP GENERATES THE FOLLOWING OUTPUTS:

1. CSR Report
 - Provides status of a company's financial, environmental and social performance
 - Allows CSR-related risk assessment along a company's supply chains
2. CSR Scorecard
 - Detects CSR-related risks, both internally and along supply chains
 - Supports a company's strategic performance improvements



FOR MORE INFORMATION, PLEASE CONTACT US ON

REAP@UNIDO.ORG
WWW.UNIDO.ORG/REAP